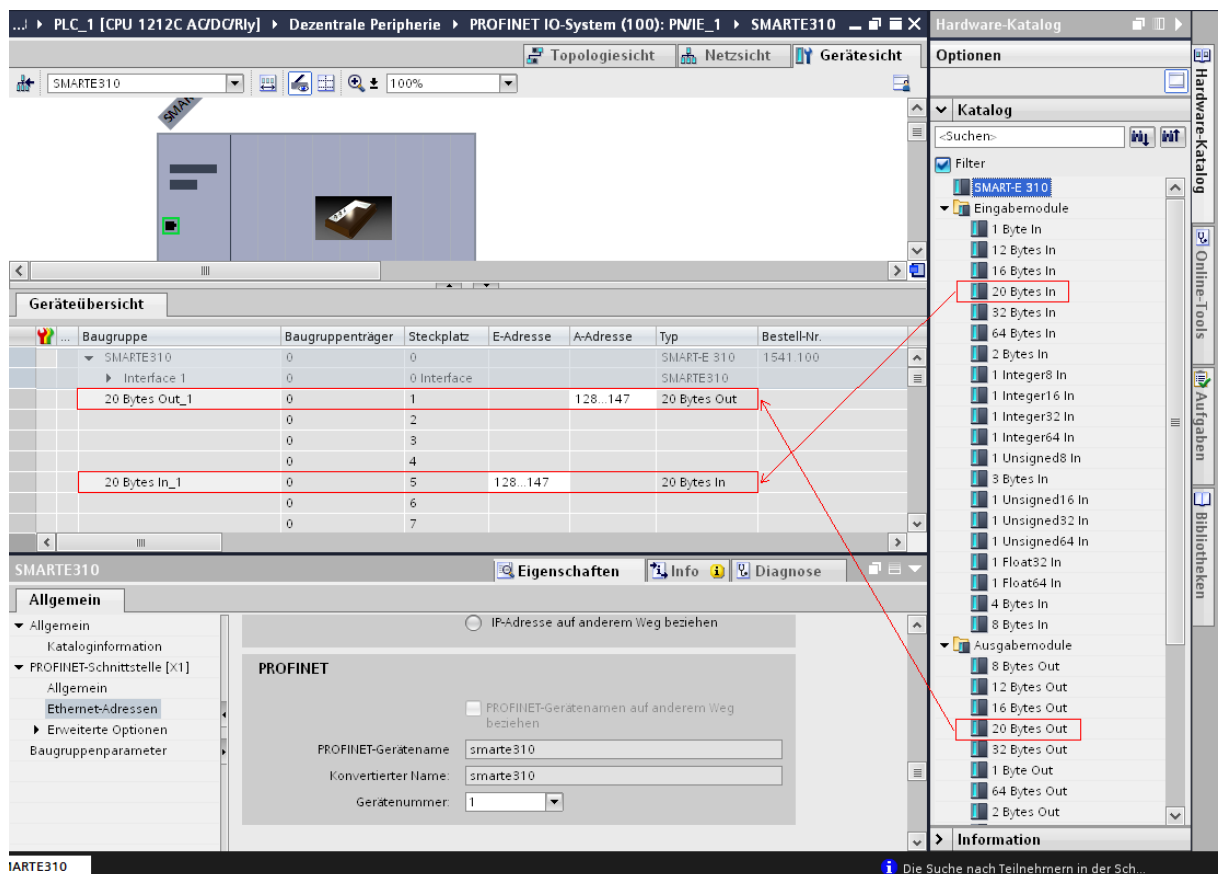


Indication of connecting the smart-E310p to a Siemens controller over Profinet

1. Copy the GSD-file and the bmp-file to a directory.
2. Install the GSD-file in SIMACTIC STEP 7.
3. Open the Projekt .
4. Smart-E310 can be found in Hardware-Catalog under other field devices--> PROFINET IO--> I/O--> Schnier GmbH--> PNS--> Kopfmodul--> SMART-E 310.
5. Connect the SMART-E 310 into Profinet IO-System.
6. Configure the input and output address.
 - 6.1. Select "20 Bytes In" from Input modules and put it in slot 5.
 - 6.2. Define the I address .
 - 6.3. Select "20 Bytes out" from Output modules and put it in slot 1.
 - 6.4. Define the Q address.



7. Change the module parameters if necessary.
8. Configure the IP address.
9. Write program etc.